

ROYCE®

TAIKONE TECHNOLOGIES INC.

"The medical foam is a game changer for wound dressing."

-- Doctor Lee

"Reliable, safe, and creative solution to a problem that has received little attention in the past."

— Doctor Huang

"Hospitals around the world should adopt this technology. It is affordable and effective."

-- Anonymous



Manufacturer:
TAIKONE TECHNOLOGIES INC.

Address: No. 49, South Suifengnian Road, Shatian Town, Dongguan, Guangdong, 523996 China
Tel.: 0769-89962228 ext 215/217
Website: www.taikonemed.com

Medical Device Grade I

Production License No.: 粤莞食药监械生产备20200001号
Registration No.: 粤东械备20200005号

Medical Device Grade II

Production License No.: 粤食药监械生产许20214416号
Registration No.: 粤械注准20212140684

ROYCE®

THE POWER OF PU FOAM DRESSING



ROYCE PU Foam Dressing Taikone Technologie's PU Foam Platform

At Taikone Technologies, we are delivering on the promise of wound dressing science to create a new generation of transformative aftercare products for patients.

TAIKONE TECHNOLOGIES INC

ROYCE®

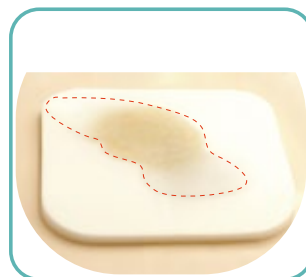
Product Advantages



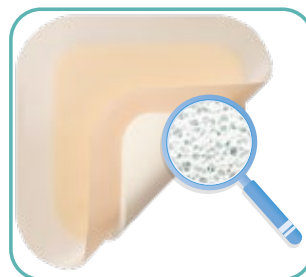
Anti bacterial



Breathable



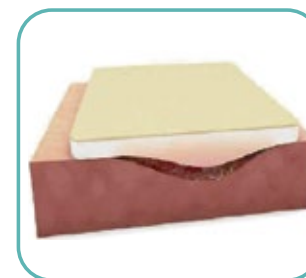
High Absorption



Cellular texture



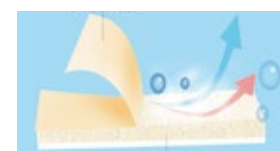
Soft



Improve Healing



Painless



Safe
Moisturize



Product Application



Nursing Care
Of Diabetes
Foot Ulcer



Burn
Department



General
Surgery



Orthopedics



Anorectal



Obstetrics And
Gynecology
Department



Pressure
Ulcers Care

ROYCE[®]

Product Introduction

Medical Device Grade II

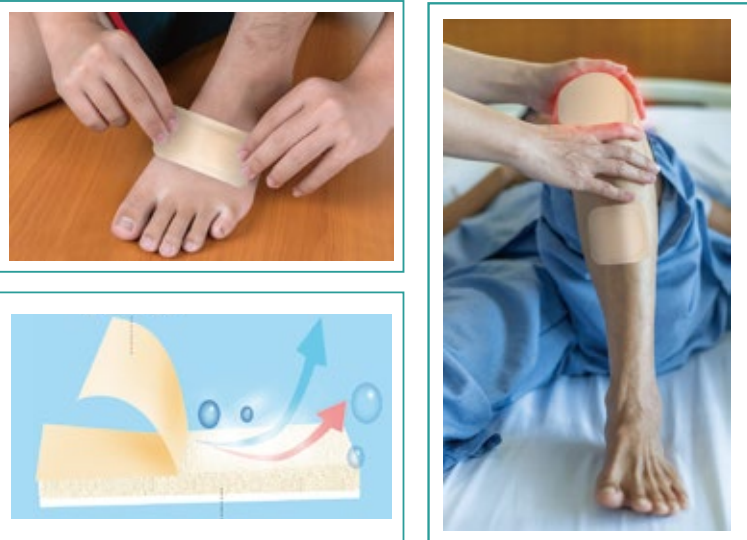
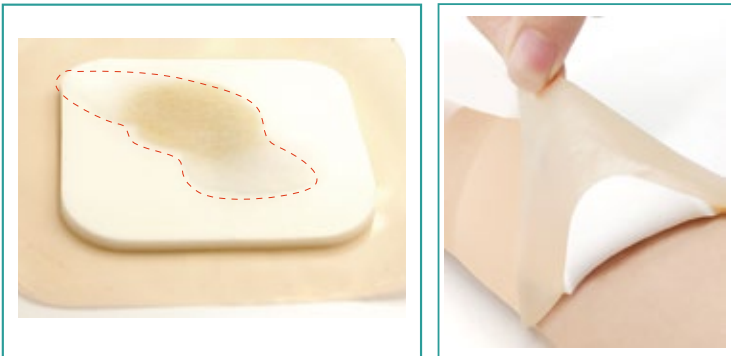
Production License No.: 粤食药监械生产许20214416号
Registration No.: 粤械注准20212140684

[Product Name] Polyurethane Foam Dressing

[Application]
Used for protection of non chronic wounds and absorbing wound exudation.

[Valid Period] 3 years

ROYCE-Polyurethane Foam Dressing It is made of unique foaming process, with 3D porous structure, strong permeability, high comfort, fast absorption, high liquid locking rate, easy replacement and other characteristics. PU backing layer: high permeability film, soft and moisturizing, waterproof and bacteria resistant. Provide a good environment for wound healing. Honeycomb foam layer: it can quickly absorb wound exudate without backflow, has strong liquid locking property, reduces the risk of penetration and impregnation, is soft and comfortable, and prevents secondary injury of the wound.



型号	规格	
	敷芯尺寸mm(长X宽X厚)	粘性PU保护膜mm(长X宽)
II001	50X50X1	85X85
II002	50X150X1	85X180
II003	100X100X1	130X130
II004	50X50X2	85X85
II005	50X150X2	85X180
II006	100X100X2	130X130
II007	50X50X3	85X85
II008	50X150X3	85X180
II009	100X100X3	130X130

Polyurethane Foam Dressing

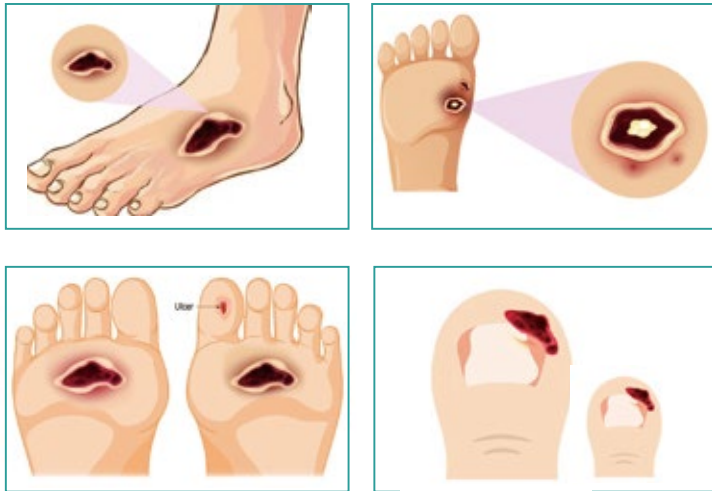
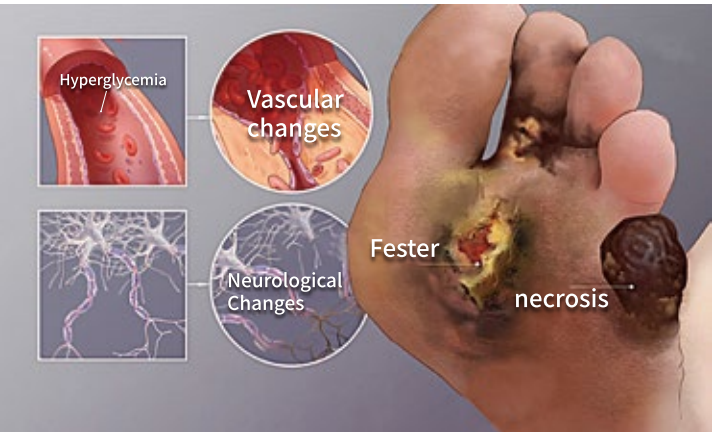
Nursing care of Diabetes Foot Ulcer

As one of the most common chronic diseases in the world, diabetes contributes to more than 1.5 million deaths every year. According to preliminary statistics, the number of diabetes patients aged 20-79 years has reached 380 million in 2012, and this number is expected to increase to 590 million in 2035.

Charcot Foot, otherwise known as Diabetic Neuropathy in the medical world, is a serious chronic complication that many diabetes patients suffer from. The high blood sugar levels in diabetes patients lead to nerve damages in the feet, which can result in numbness, pain, or loss of feelings in the one's foot. According to the CDC, almost half of the Diabetic population suffers from nerve damage.

ROYCE-Polyurethane Foam Dressing can help patients to effectively care for foot ulcer, prevent large-area infection, and delay the deterioration of the disease.

Diabetes foot



Polyurethane Foam Dressing

Burn Department

The primary goal of burn wound care is wound closure, preventing infections, and rehabilitation.

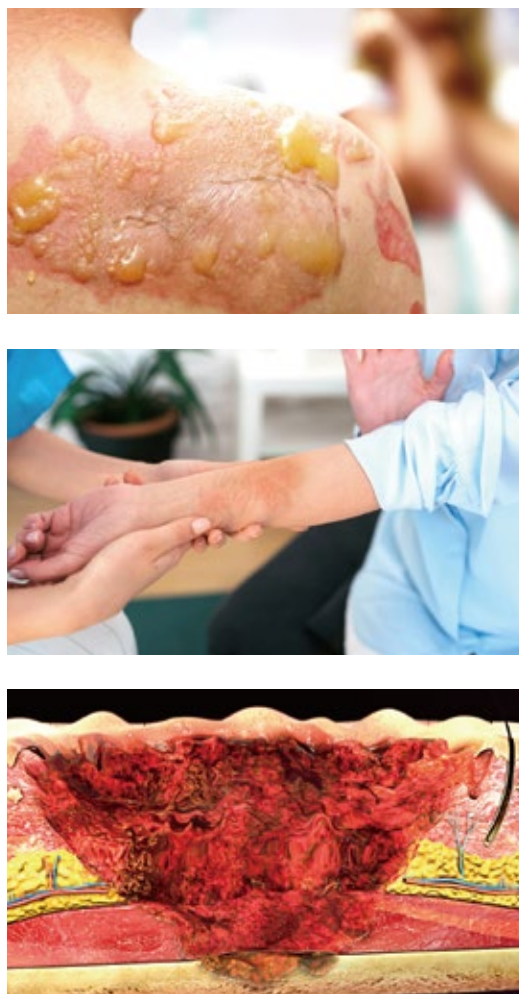
After the skin of the burn patient is damaged, the biological fluid in the body begins to exude (BWEs), and the exudation period lasts for 1-2 days.

During the acute infection period, bacteria can easily invade the body through the burn wound to cause infections.

The wound repair process starts soon after the wound surface is inflamed. The patient should prioritize wound healing, infection control and nutrition during the recovery process. It is helpful to boost the body's immune system in order to speed up wound repair.

During the rehabilitation period, the skin can be restored to its original state through rehabilitation training and plastic surgery.

When treating burn wounds, professional nursing measures should be implemented, including wound care, cleaning care, and pruritus care.



ROYCE-Polyurethane Foam Dressing can quickly absorb wound exudate, protect the wound against bacterial infections, and keep the wound in a warm and clean environment that .

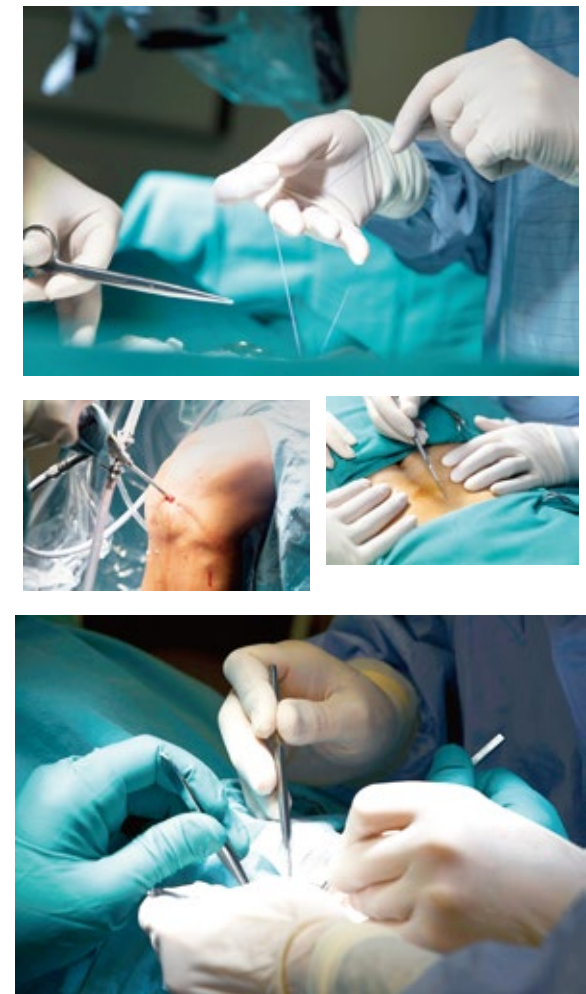


Polyurethane Foam Dressing

General Surgery

The demand for advanced wound dressing technology is growing at an astonishing speed as the number of surgical operations in the world continue to increase. Most surgical wounds are relatively large in size and depth, which will release exudates that need to be treated regularly. The Polyurethane foam dressings help to manage large and small wounds, thus significantly reducing the risk of infection.

ROYCE-Polyurethane Foam Dressing quickly absorbs the wound exudate after surgical operation, stops bleeding quickly, and provides a stable environment for the wound to recover quickly and with limited risks of infections. The foam has great air permeability: preventing bacteria from infecting the wound while giving it the space to breathe at the same time.



Polyurethane Foam Dressing

Orthopedics

Infection symptoms after surgery most commonly include redness, swelling, heat, pain, and the formation of secretions in the operation area. Postoperative infections are also accompanied by changes in vital signs, such as shortness of breath, increased body temperature, or heart rate changes. After a surgery, if one experiences 5-7 days of fever, it is highly probable that the incision is infected and that there is purulent secretion surrounding the wound. In the early stages of incision infection, it is necessary to remove part of the suture, carry out thorough debridement and drainage, and prevent the infection from spreading to the bone tissue.

ROYCE-Polyurethane Foam Dressing can alleviate the discomfort caused by wound pulling, reduce pain, quickly absorb wound exudate, promote wound granulation tissue growth, and effectively prevent wound infection.

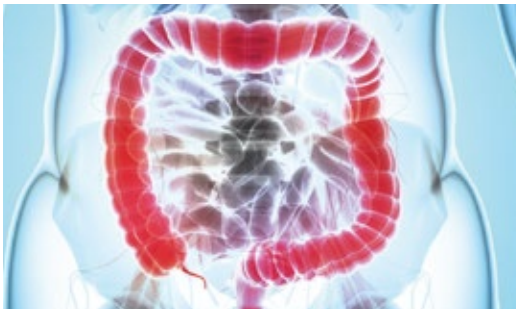
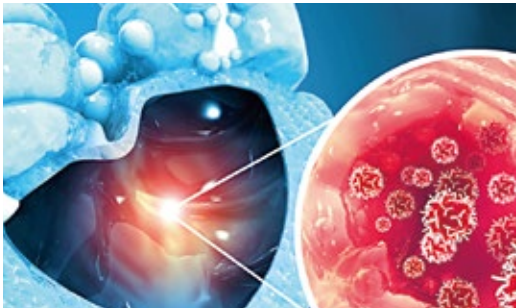
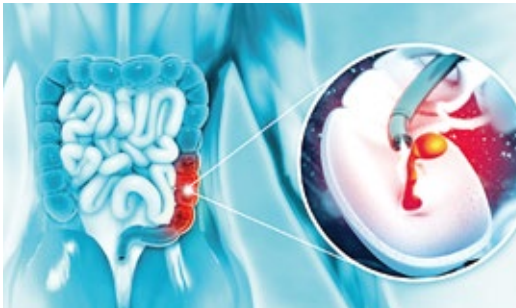


Polyurethane Foam Dressing

Anorectal

Most anorectal surgeries produce open wounds. After surgery, the wounds are sutured to stop bleeding, and the wound causing factors (such as pathogens) and necrotic tissues are removed to prevent wound infection. After the debridement process, blood vessels and collagen protein will appear first. Then, the epithelial tissue will regrow. Finally, the wound will close. During the process of fighting an infection, macrophages and neutrophils in the body die in large numbers. The edges of the wounds become red and swollen gradually, with rotting tissues on the surface and pus like secretions seeping. Patients' pain and discomfort levels are likely to be extremely high.

ROYCE-Polyurethane Foam Dressing is used during any of the four stages of wound recovery (coagulation stage, inflammation stage, repair stage and maturity stage). It can quickly absorb wound exudates, promote granulation tissue formation and epithelial tissue regeneration. The foam is soft and comfortable and can alleviate discomfort near the wound, while reducing the risk of a wound infection.



ROYCE[®]

Product Introduction

Medical Device Grade I

Production License No.: 粤莞食药监械生产备20200001号
Registration No.: 粤东械备20200005号

[Product name] Medical Protection Pad
[Application]

It is used to provide general protection for patients,to avoid being injured by pressure or contact.

[Valid period] 3 years

ROYCE-Medical Protection Pad is composed of a backing layer (PU film), a foam layer and an isolation layer. The foam contact layer is soft and comfortable, and the skin surface has strong adaptability, which can better and effectively alleviate the external damage to the skin and provide better protection for patients. Self adhesive, reduce pain and trauma when changing dressing.

Waterproof protection: semi permeable PU film is waterproof and breathable, with good skin care effect, and can build a skin health barrier.

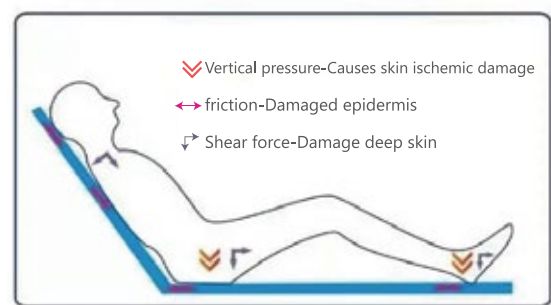
Thickened foam layer: the foam layer is 5mm thick, with good comfort. Repeated friction is not easy to damage the skin. Thickened core layer can effectively relieve pressure and reduce the forma-

[Product Size]

型号	规格	
	衬垫尺寸mm(长X宽X厚)	医用胶带尺寸mm(长X宽)
YI001	130X130X5	180X180
YI002	100X100X5	150X150
YI003	150X50X5	180X85
YI004	150X150X5	208X208



Harm of pressure ulcer



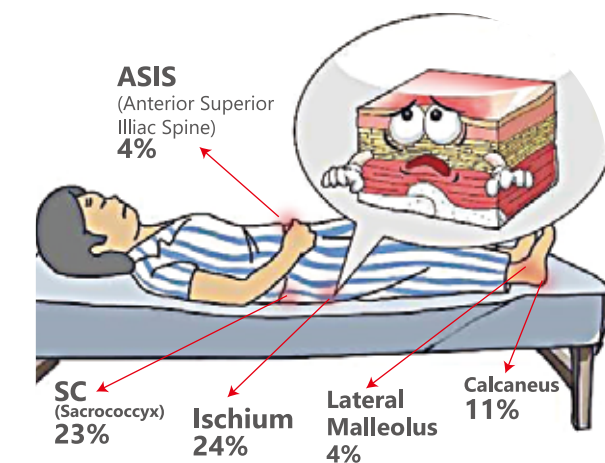
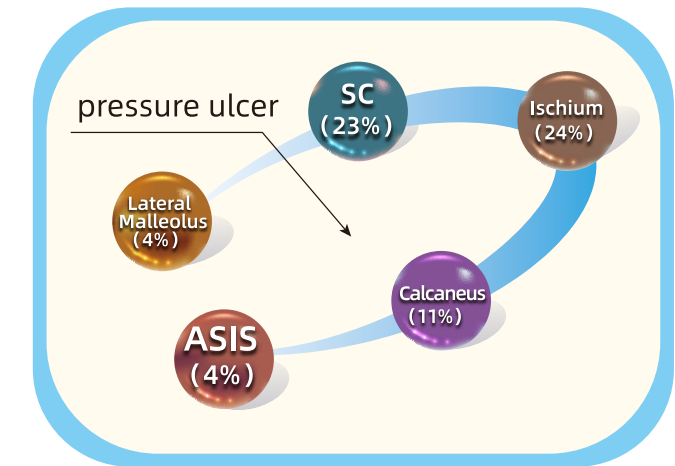
Medical Protection Pad

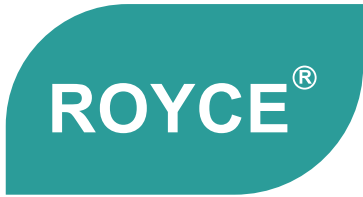
Pressure Ulcers Care

Statistics show that 24-48% of patients in comas or in paralysis: 25-85% of patients with spinal cord injuries: 10-25% of elderly patients: 50% of patients treated at home: experience pressure ulcers (bedsores).

Patients who have been in bed for a long time will suffer from infection, necrosis and ulceration due to reduced limb activities and long-term compression of some tissues by their body weight. The lumbosacral, hip, hip, and heel are the most common body parts affected. Therefore, in addition to turning over regularly, patients who have been in bed should also strengthen the protection of the affected body parts, and utilize corresponding nursing procedures to reduce pressure.

ROYCE-Medical Protection Pad can improve the comfort of the patient's pressure ulcers, thicken the core layer, effectively relieve the pressure, reduce the formation of the pressure ulcers, and provide general protection for patients to avoid being injured by other instruments.





Product Introduction

Scar Repairing Silicone Gel Pad

(in processing of medical grade II application)

[Product Name]

Scar Repairing Silicone Gel Pad

[Application]

Caesarean Scars、 Orthopedic Scars、
Burn Scars

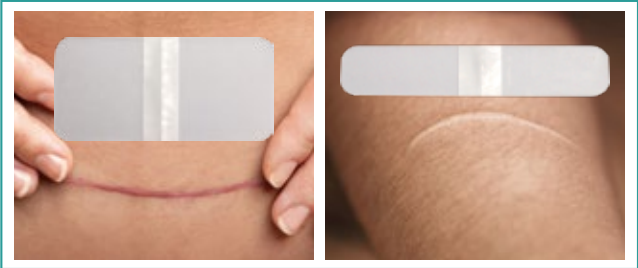
[Valid Period] 3 years

ROYCE-Scar Repairing Silicone Gel Pad

is good for prevent and treat hypertrophic and keloid scars. The sealing and hydration of the silicon gel scar repair patch can increase the moisture content of the stratum corneum, which will effectively soften scars and achieve the purpose of preventing and treating scars. Generally, after a few weeks of application, the scar tissue starts to soften. After 2-3 months, the color becomes light and the scar flattens. As the scar improves, the itching, pain, and other symptoms that are usually seen in wound care will also start to diminish.

[Product Size]

规格型号	尺寸（宽度X长度）mm
TG001 3X15	30X150
TG002 4X6	40X60
TG003 7X15	70X150



Scar Repairing Silicone Gel Pad

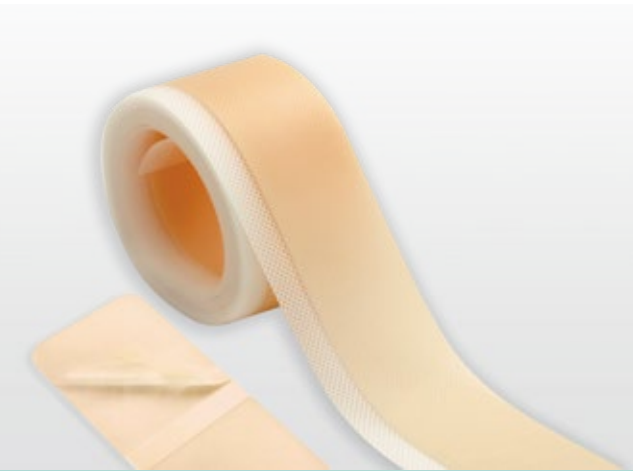
Obstetrics and Gynecology Department

After a wound is freshly sutured, there will be exudation and bleeding on the surface accompanied by inflammatory cell infiltration. A laparotomy is usually performed 1-2 days after the operation during this stage of the healing process.

ROYCE-Polyurethane Foam Dressing can quickly absorb the blood seepage around the wound, keep the wound in a moist environment, and reducing the probability of an infection.

After surgery, the wound will start going through the four stages of healing which is hemostasis, inflammation, proliferation, and remodeling. The wound will heal further and then the suture can be removed. About two to three weeks after, the scar begins to proliferate, which is when cells around the wound begin to multiply. Some patients will experience swelling, reddening, or hardening at the site of the wound.

ROYCE-Scar Repairing Silicone Gel Pad is good for prevent and treat hypertrophic and keloid scars. The sealing and hydration of the silicon gel scar repair patch can increase the moisture content of the stratum corneum, which will effectively soften scars and achieve the purpose of preventing and treating scars. Generally, after a few weeks of application, the scar tissue starts to soften. After 2-3 months, the color becomes light and the scar flattens. As the scar improves, the itching, pain, and other symptoms that are usually seen in wound care will also start to diminish.



ROYCE[®]

Product Introduction

NPWT FOAM

(in processing of medical grade II application)

[Product Name] NPWT FOAM

[Application]

This product is used for continuous negative pressure drainage on open wounds with large amount exudation.

[Valid Period] 3 years

NPWT



NPWT FOAM

